

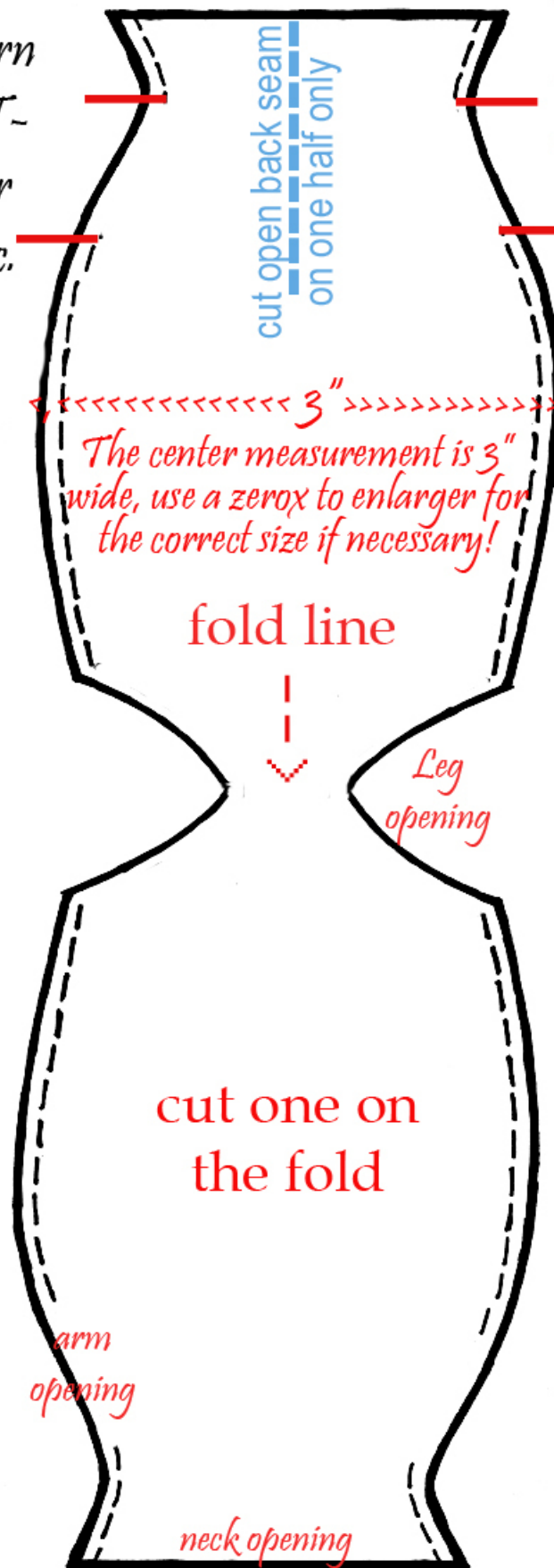
7" Baby Fabric Body Pattern

by Patricia Rose

This fabric body pattern can be made of heavy T-shirt material or other slightly stretchy fabric.

There is no sleeve pattern with this. Use a piece of stretchy fabric for the arm cover. Just roll it in a long band and glue it around the top of the doll arm, but not to the body.

This allows the arms free movement. Fabric-tac glue is to be used to close the back opening and side openings where the dolls arm wire and arms are.



Leave side seams open between the red lines for arm wire.

3"
The center measurement is 3" wide, use a zerox to enlarger for the correct size if necessary!

fold line

cut one on the fold

Cut one piece of fabric out. Sew side seams. Turn 1/4" edge under on the leg and neck openings for a drawl string pocket. Place string in the pocket and stitch openings. Make sure the drawl strings are not sewn into the side seams. Pull strings to gather the fabric around the neck and leg openings once the doll is carefully inserted.